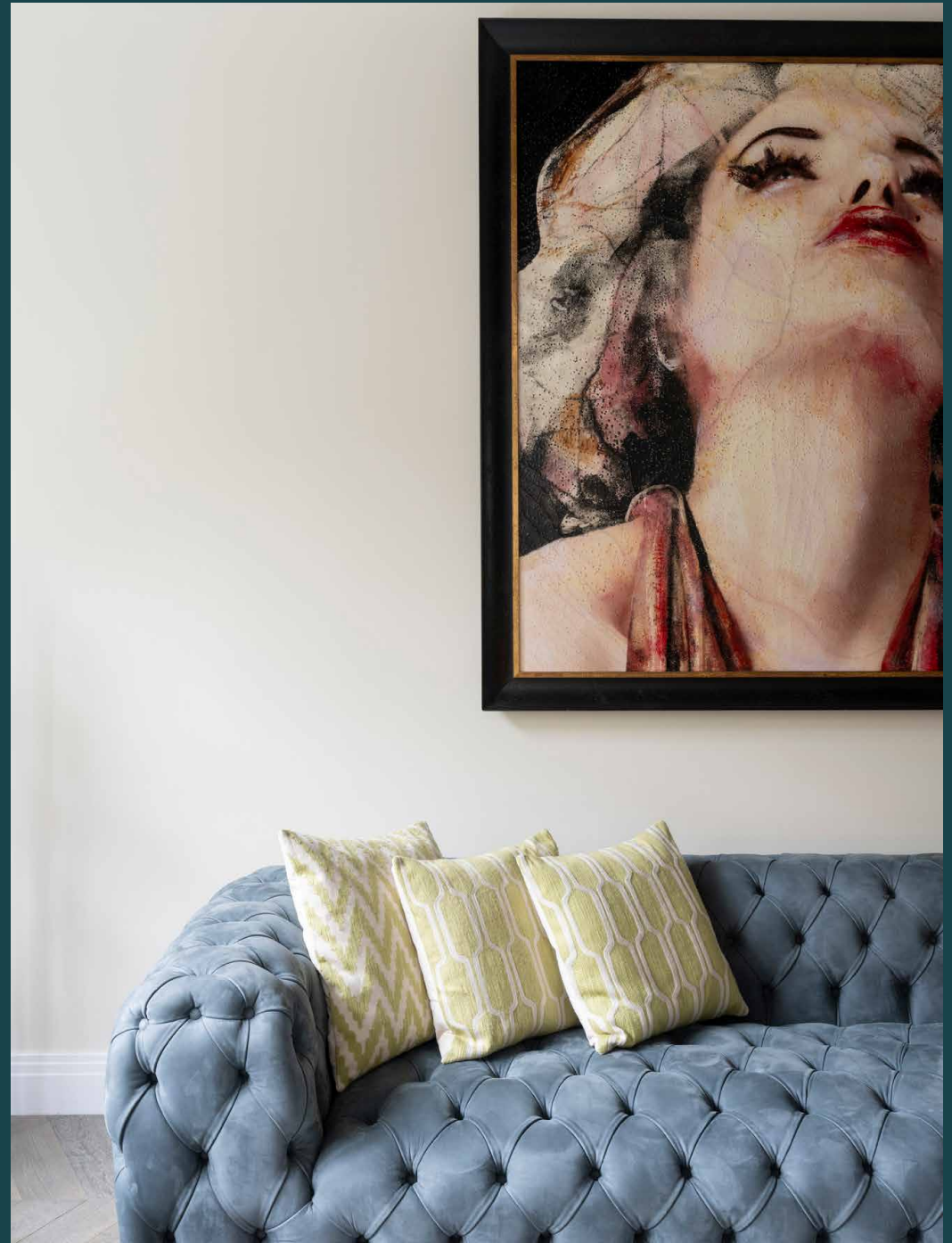




Chelsea Park Gardens

Chelsea SW3

5 Bedrooms, 4 Bathrooms
For 10 guests





A semblance of country living in the heart of central London. This five-bedroom Arts and Crafts-style house enjoys a cottage-like feel, and access to an exclusive communal garden.

Minutes from the King's Road, the peaceful setting of this impressive home feels miles away from the thrum, even with the epicentre of Chelsea right on the doorstep. When you're done exploring, this is the place to kick back.

Spread over four floors, striking contemporary design elevates a family focused layout. Flawless interiors are a common feature throughout. On the ground floor, a double reception room encompasses a formal living and dining space. Every detail has been chosen for comfort without compromising on style. Mock Tudor ceilings and a marble fireplace add warmth, while blue Chesterfield sofas tick the boxes for relaxation. Neutral-coloured walls showcase a gallery of large-scale artworks – a conversation starter for dinner parties around the eight-seater table.

Crittall-style doors lead into a kitchen equipped for every eventuality. Dark burnished cabinetry and stone surfaces stretch to the ceiling, emphasising the generous proportions of the room. There's a breakfast table for informal meals and a B&B Italia sofa, meaning chefs can socialise with the rest of the crew as they cook. From this floor, step out to a secluded patio that opens onto an exclusive communal garden accessed by only nine other houses.



Neutral-coloured walls showcase a gallery of large-scale artworks – a conversation starter for dinner parties around the eight-seater table.

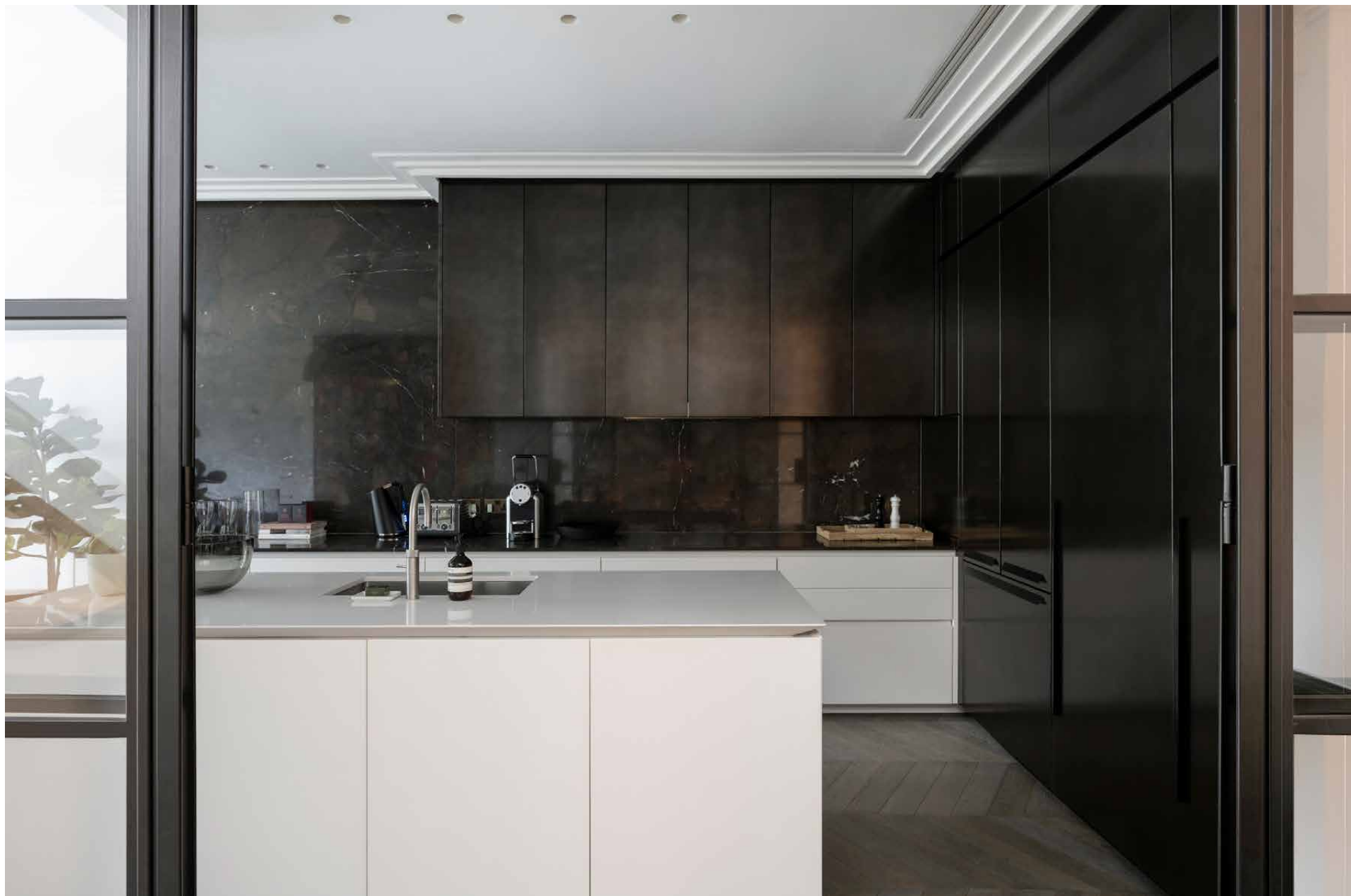


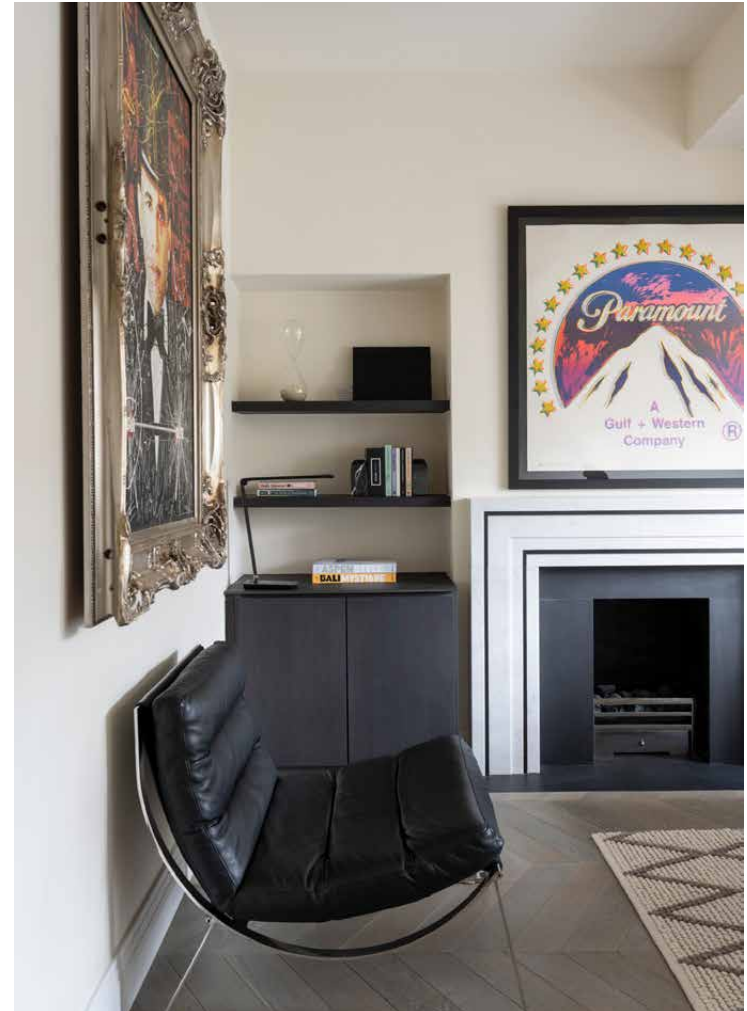
“

Dim the lights, mix a drink at the bar and gather friends and family around the formal dining table. Dinner at its most ambient.











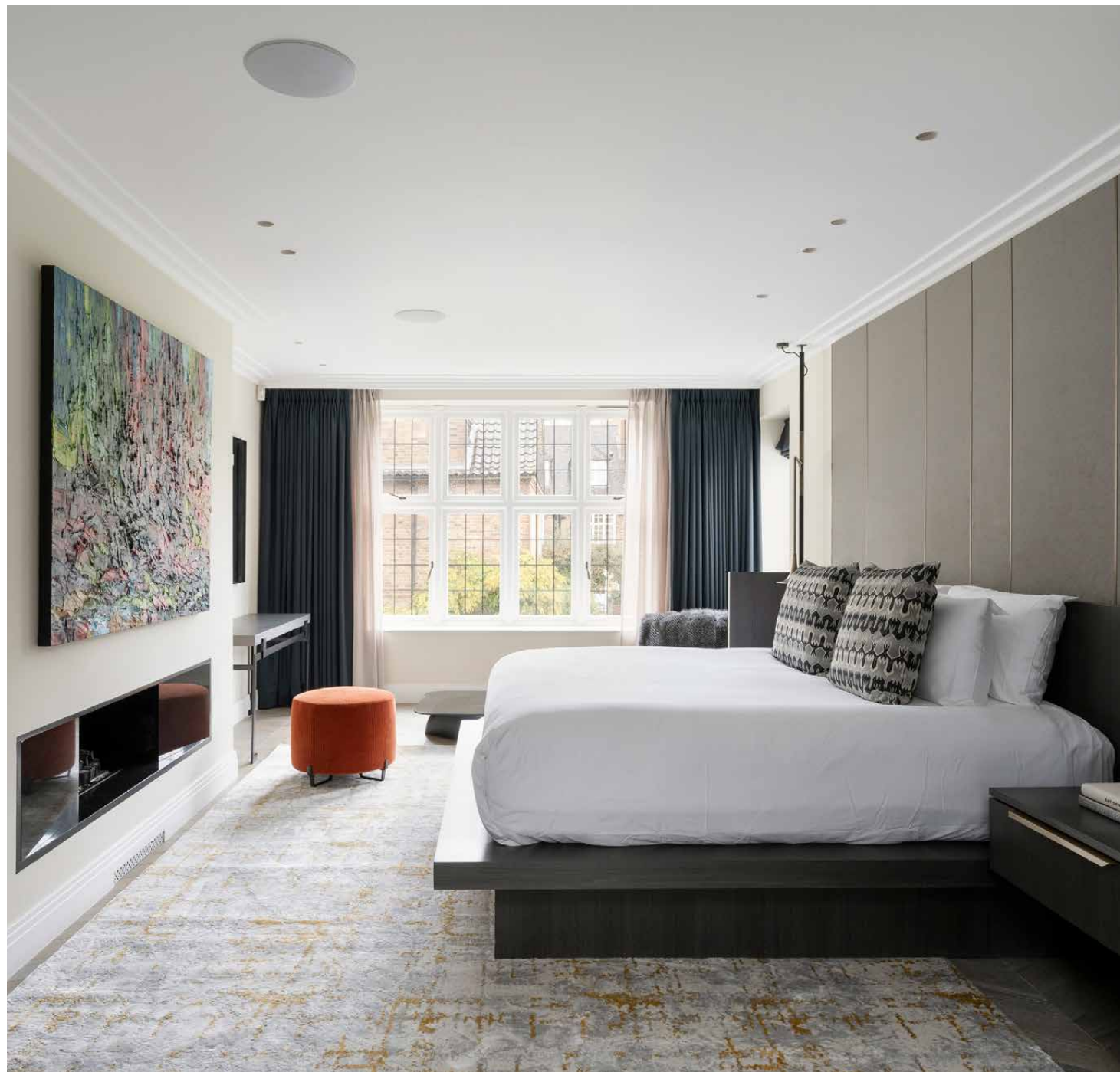
A sculptural staircase leads down to an expansive media room. An atmospheric space that's made for movie nights, four-metre-high ceilings, a L-shaped sofa and a large-screen TV all contribute to the silver screen experience. There's also a pool table to keep everyone entertained. Elsewhere, this floor features a utility room, a cloakroom and an en suite bedroom with access to a patio – an ideal option for a nanny or older children.



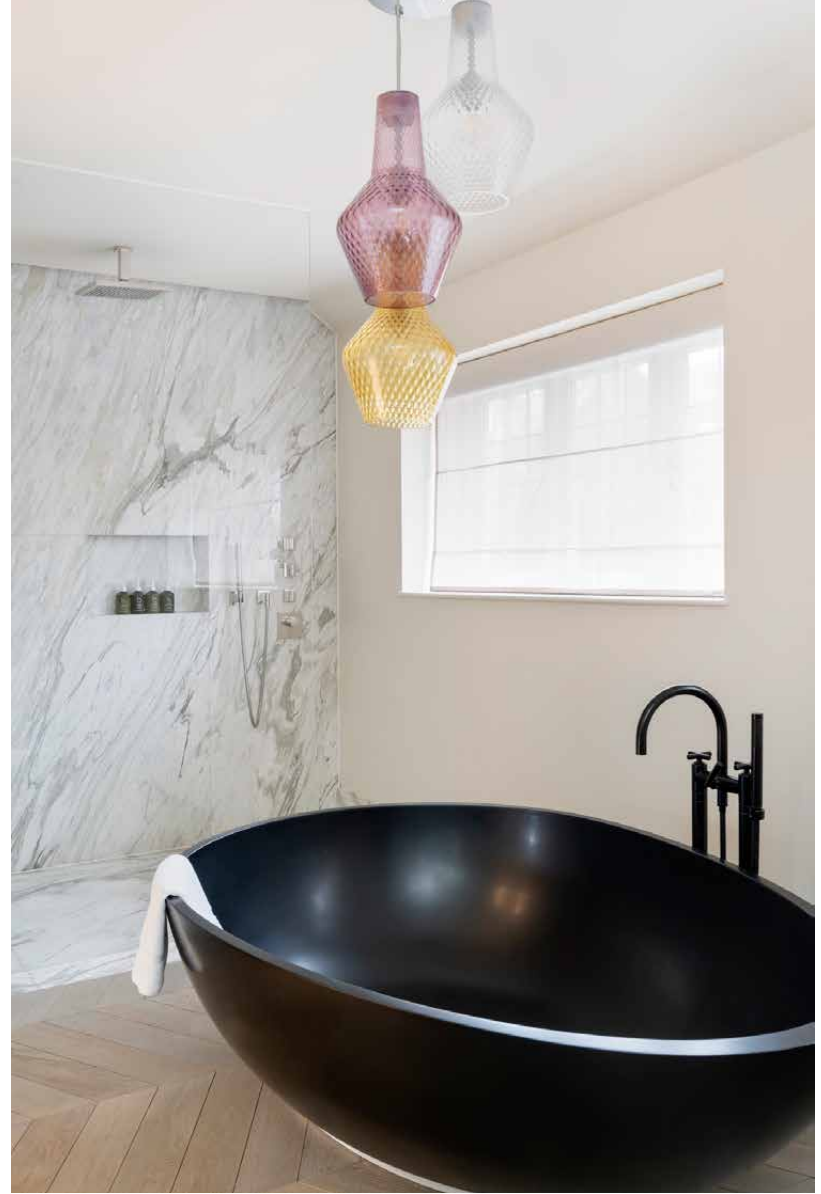
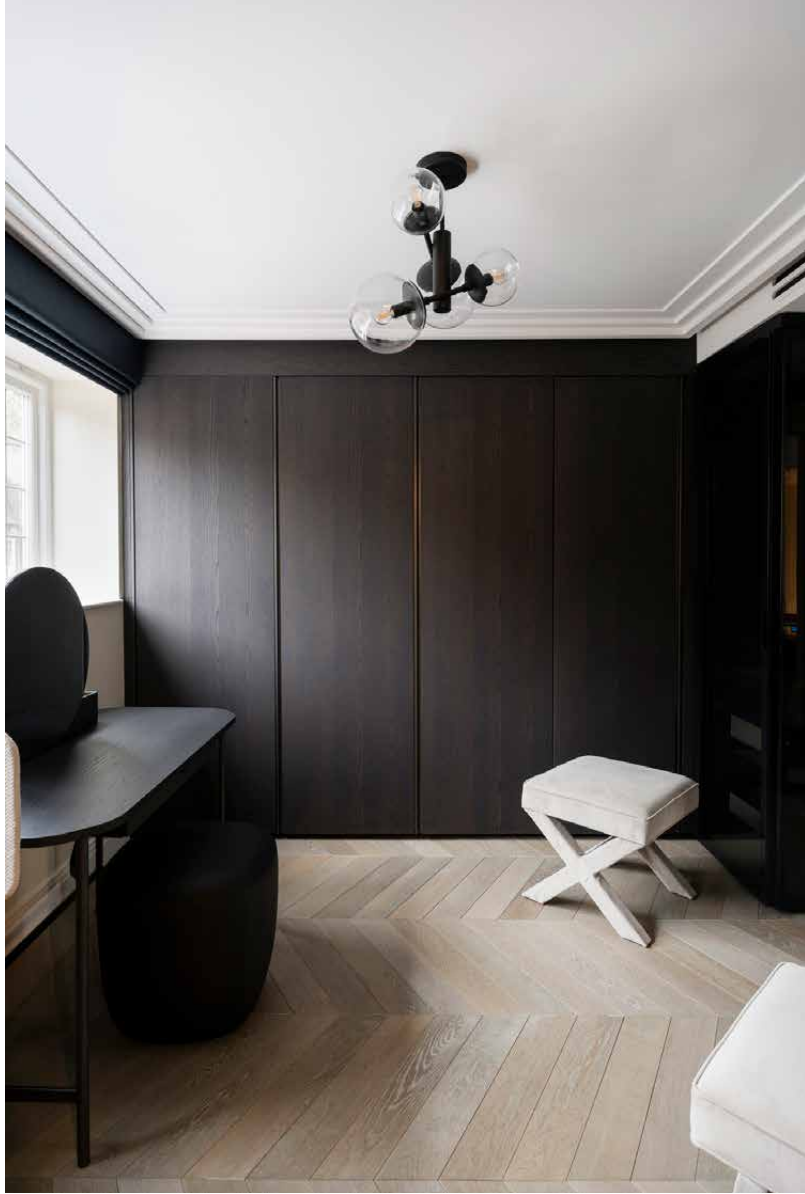


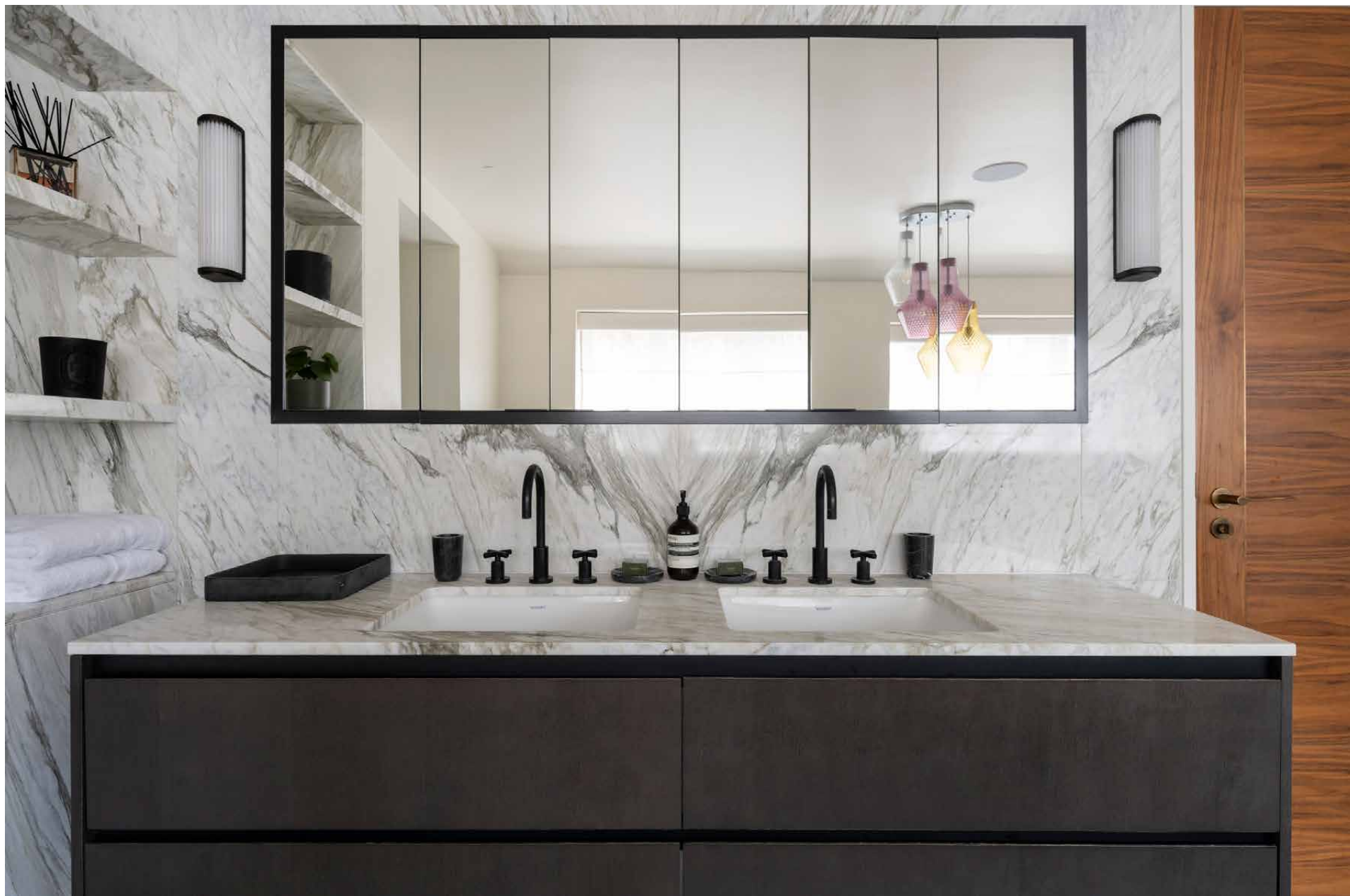
Four further bedrooms are arranged over the top two levels. The principal suite is a showstopper of a space. Occupying the entire first floor, it encompasses a walk-in wardrobe and its own TV room, complete with Ligne Roset sofas, a contemporary fireplace and a balcony. Carpets threaded with subtle gold tones and a panelled wall bring softness. From the platform bed, its only a few steps to the opulent bathroom. Here, a black, egg-shaped bathtub is joined by a huge walk-in shower wrapped in marble.

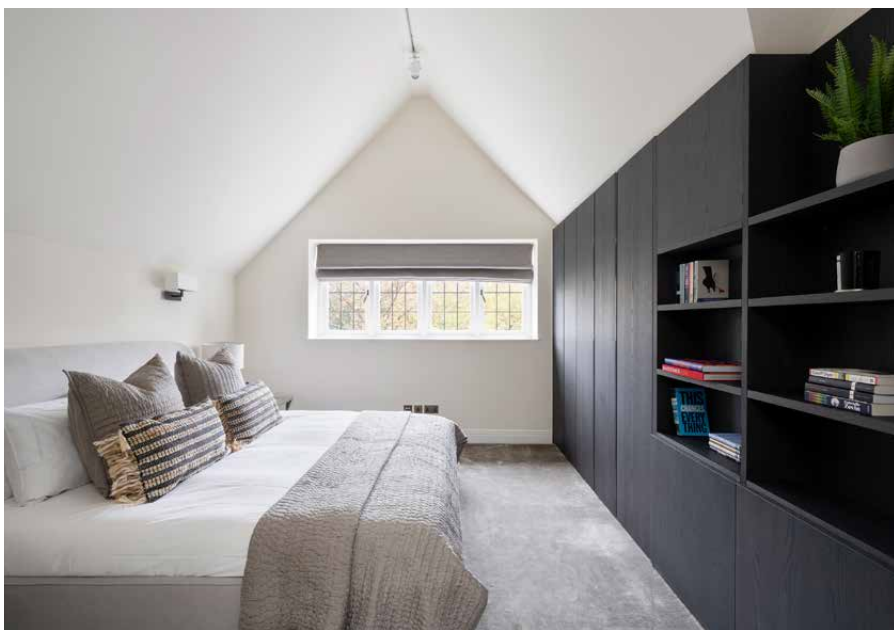
Two guest bedrooms – one that features a vaulted ceiling and a mezzanine for storage – are similarly sophisticated and served by a Jack-and-Jill bathroom. A further bedroom enjoys fitted storage and access to a polished family bathroom, finished in floor-to-ceiling marble. There's also a quiet study for home working.



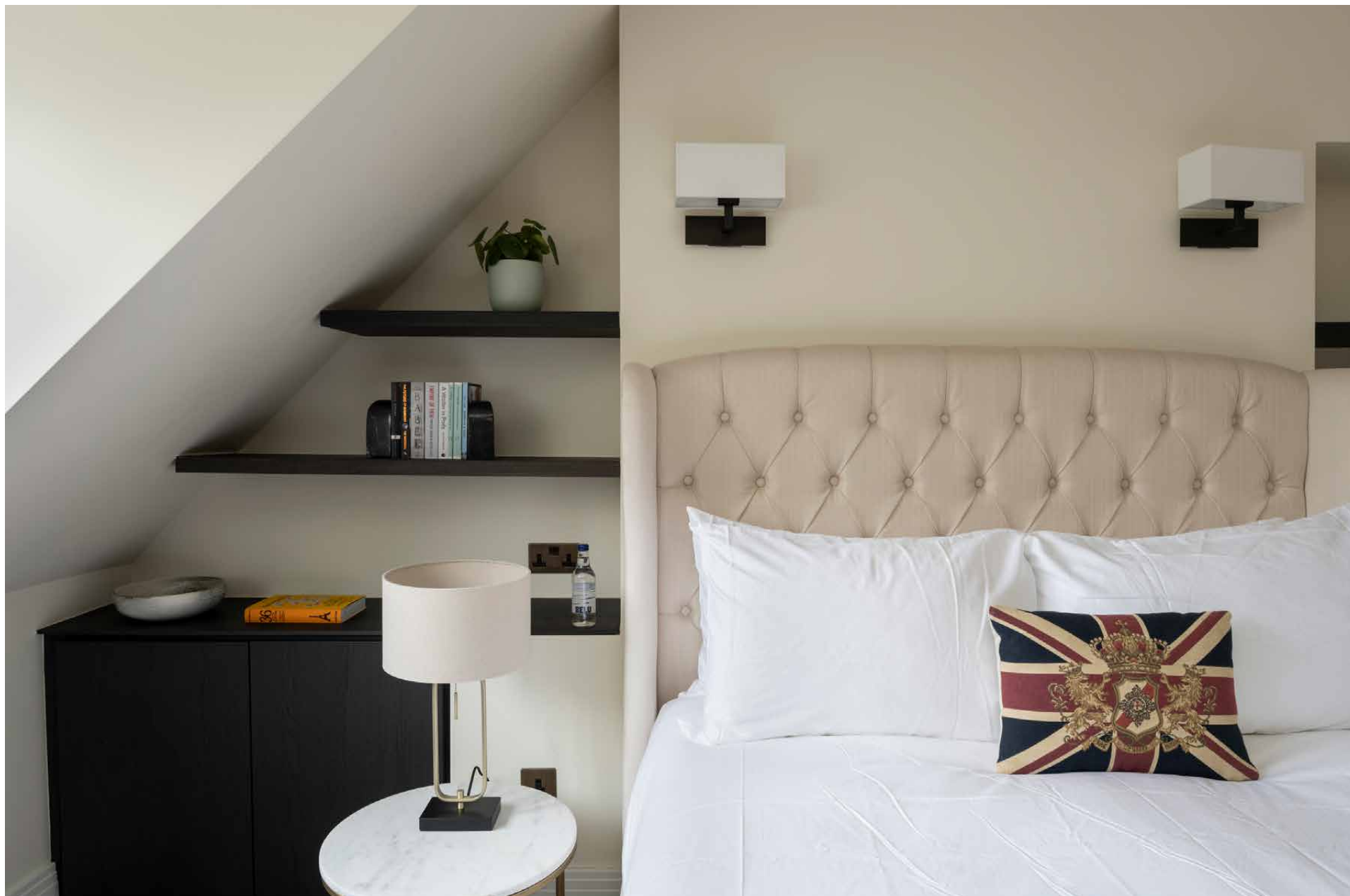










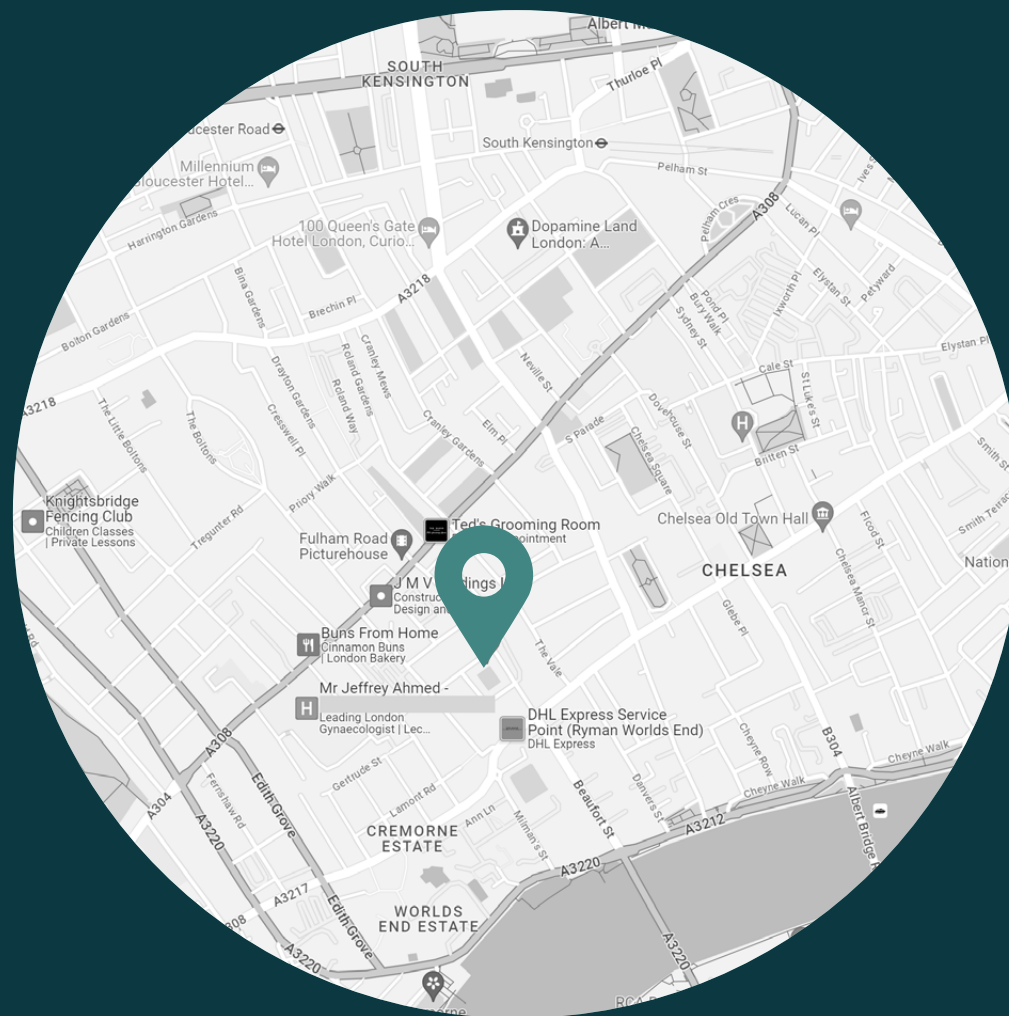




LOCATION

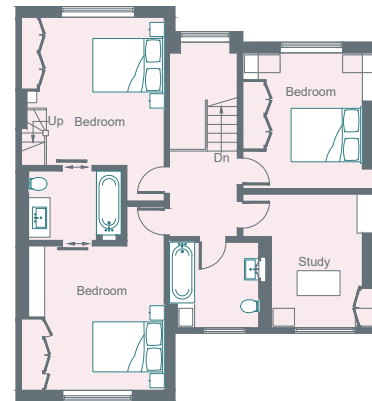
A momentary break from the bustle of the King's Road, the best of Chelsea awaits here.

Designer boutiques, Michelin-starred restaurants and people watching potential – all on your doorstep. Good days start with a vinyasa flow session at Triyoga followed by brunch at Bluebird and an afternoon film screening at Everyman. Refresh your wardrobe before dinner at Medlar or Chicama. For special occasions, book a table at two-Michelin-starred Claude Bosi at Bibendum.

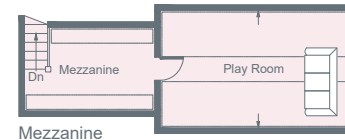


PROPERTY HIGHLIGHTS

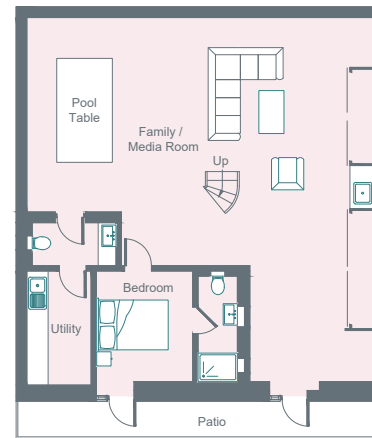
- Double reception and dining room
- Contemporary eat-in kitchen
- Media room
- Principal bedroom suite with TV snug, walk-in wardrobe and balcony
- Guest bedroom suite
- Three further bedrooms
- Two further bathrooms
- Study
- Private patio and access to a communal garden square
- Royal Borough of Kensington & Chelsea



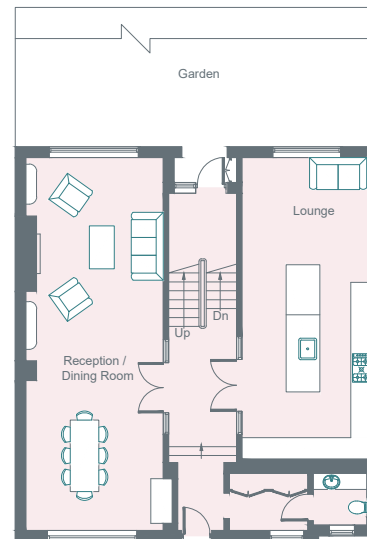
Second Floor



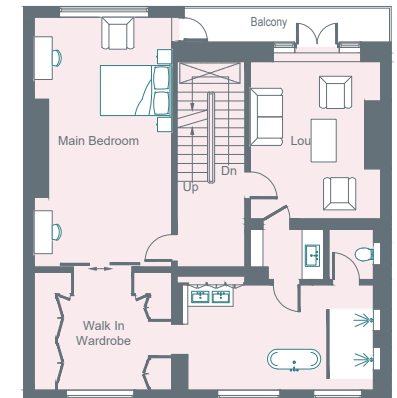
Mezzanine




Lower Ground Floor



Ground Floor



First Floor

 = Reduced headroom below 1.5m / 5'0"

Approximate Area = 412.6 sq m / 4441 sq ft
Including Limited Use Area (19.4 sq m / 209 sq ft)

Drawn for Illustration Purposes Only
fourwalls-group.com 61259



Please don't hesitate to get in touch
if you have any questions or require
any further information.

hello@domusstay.com

+44 (0)20 8168 8880

Domus Stay provides the perfect combination of property, place and personal service for the world's most remarkable people. If you have any questions, or if we can help in any way, please contact us on the above number. Be it about a property you have, a property you want, dates to check or any special requirements you may need, we'd love a chat.

