

domus
stay.

Westbourne Terrace

Paddington W2

2 Bedrooms, 2 Bathrooms
For 4 guests





In enviable proximity to Paddington, this two-bedroom duplex is poised for cosmopolitan city living. Understated interiors, wrapped in a Georgian framework.

With their white stucco frontages, the soaring townhouses of Westbourne Terrace have lost none of their period charm. Step inside this duplex apartment though and you'll find a home reimagined with modern sensibilities. With its open-plan layout and neutral colour palette, function is prioritised throughout.

Arranged over the top two levels of the building, one floor is dedicated to communal spaces and the other to two bedroom suites. A black spiral staircase serves as a centrepiece in the reception room and kitchen. On one side, an L-shaped grey sofa and TV, plus a bookshelf fitted with reading lights that transforms the corner into a cosy reading nook. To the other, an oval dining table that seats six – with soft accent lighting courtesy of two hanging pendants.

A trio of windows look out over the plane trees that line the road. Enjoy the leafy views from the kitchen. Well-equipped and ergonomic, glossy black worktops pop against the white walls and cream units. There's ample storage and preparation space, too.



With their white stucco frontages, the soaring townhouses of Westbourne Terrace have lost none of their period charm.



“

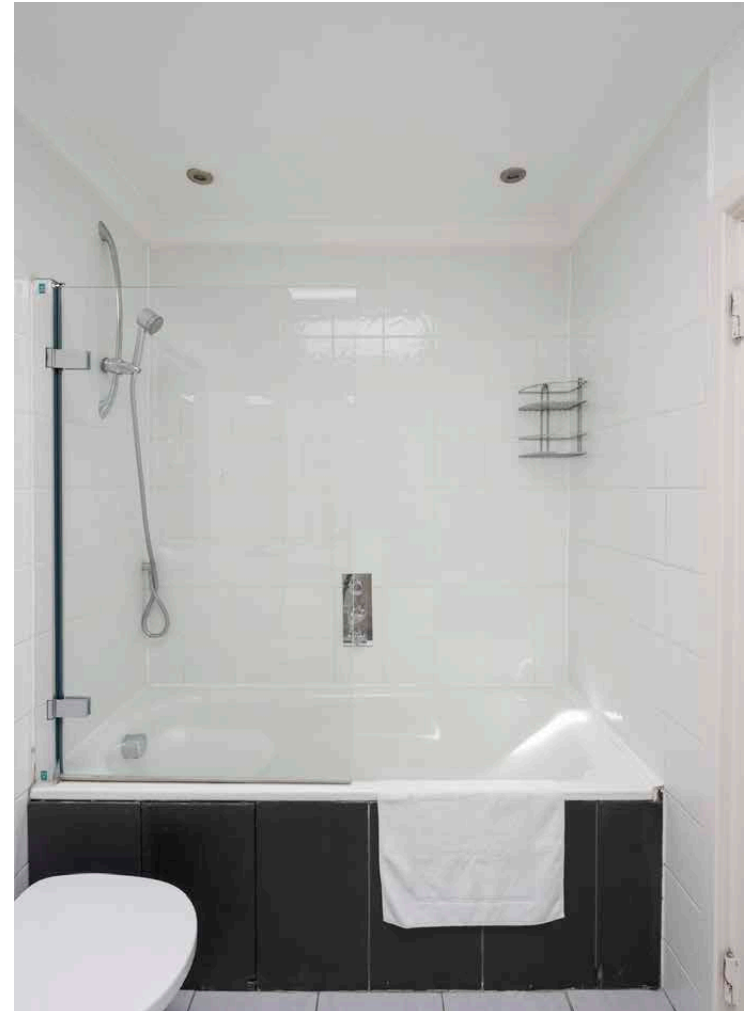
A neutral colour palette and less-is-more approach create a welcoming feel.



On the floor above, the bedrooms are inviting in their simplicity. Fitted wardrobes reduce visual clutter while neutral shades keep the backdrops bright and airy. For those looking to get some work done, one features a desk positioned under the window. Both come with considered en suite bathrooms that add ease to morning routines.





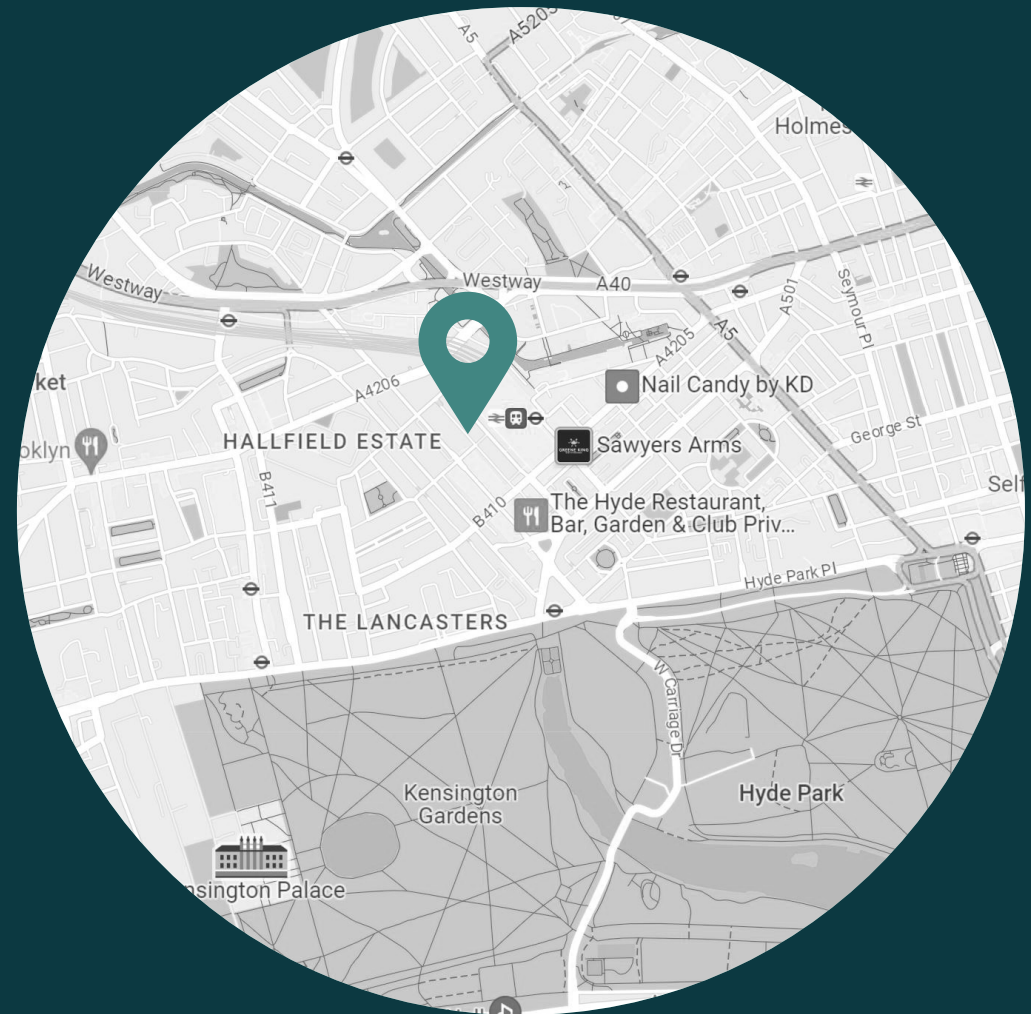




LOCATION

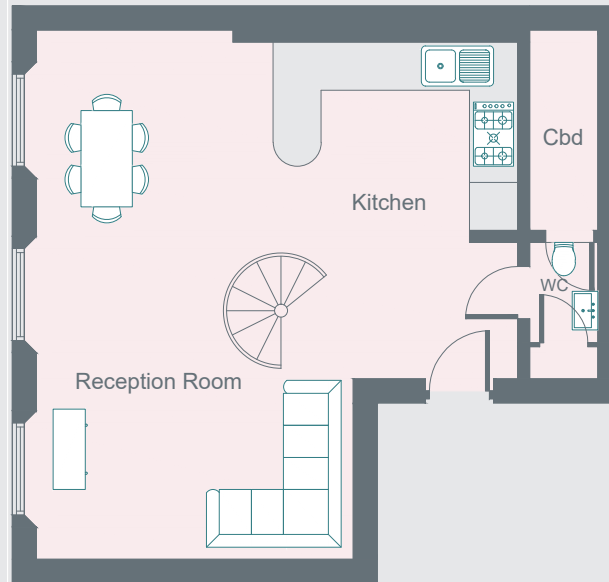
A stone's throw from Paddington station, Westbourne Terrace puts central London in easy reach. Closer to home, the diversions of Bayswater and Notting Hill await.

With the buzz of West London just outside the door, you're also well located for more meditative city moments here. From Paddington Basin, walk along Little Venice canal and admire the colourful barges. There's plenty of waterside entertainment; catch a performance at the Canal Café Theatre. Hyde Park is a short walk southwards – kickstart the day with an invigorating swim at the Serpentine Lido then refuel with brunch at Sunday in Brooklyn. Or venture further into Notting Hill to peruse the famous Portobello Road Market. Come evening, pay a visit to local favourite The Cleveland Arms.

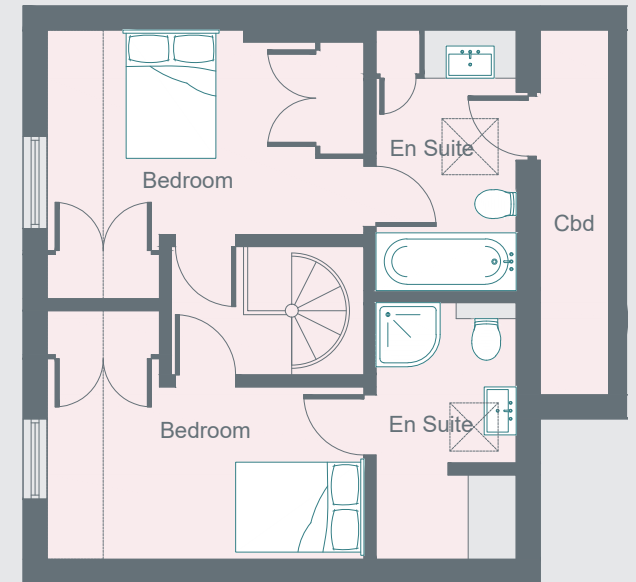


PROPERTY HIGHLIGHTS

- Open-plan reception room and kitchen
- Two en suite bedrooms
- Additional cloakroom
- Excellent local amenities and transport links
- City of Westminster



Third Floor



Fourth Floor



Please don't hesitate to get in touch if you have any questions or require any further information.

hello@domusstay.com

+44 (0)20 8168 8880

Domus Stay provides the perfect combination of property, place and personal service for the world's most remarkable people. If you have any questions, or if we can help in any way, please contact us on the above number. Be it about a property you have, a property you want, dates to check or any special requirements you may need, we'd love a chat.

