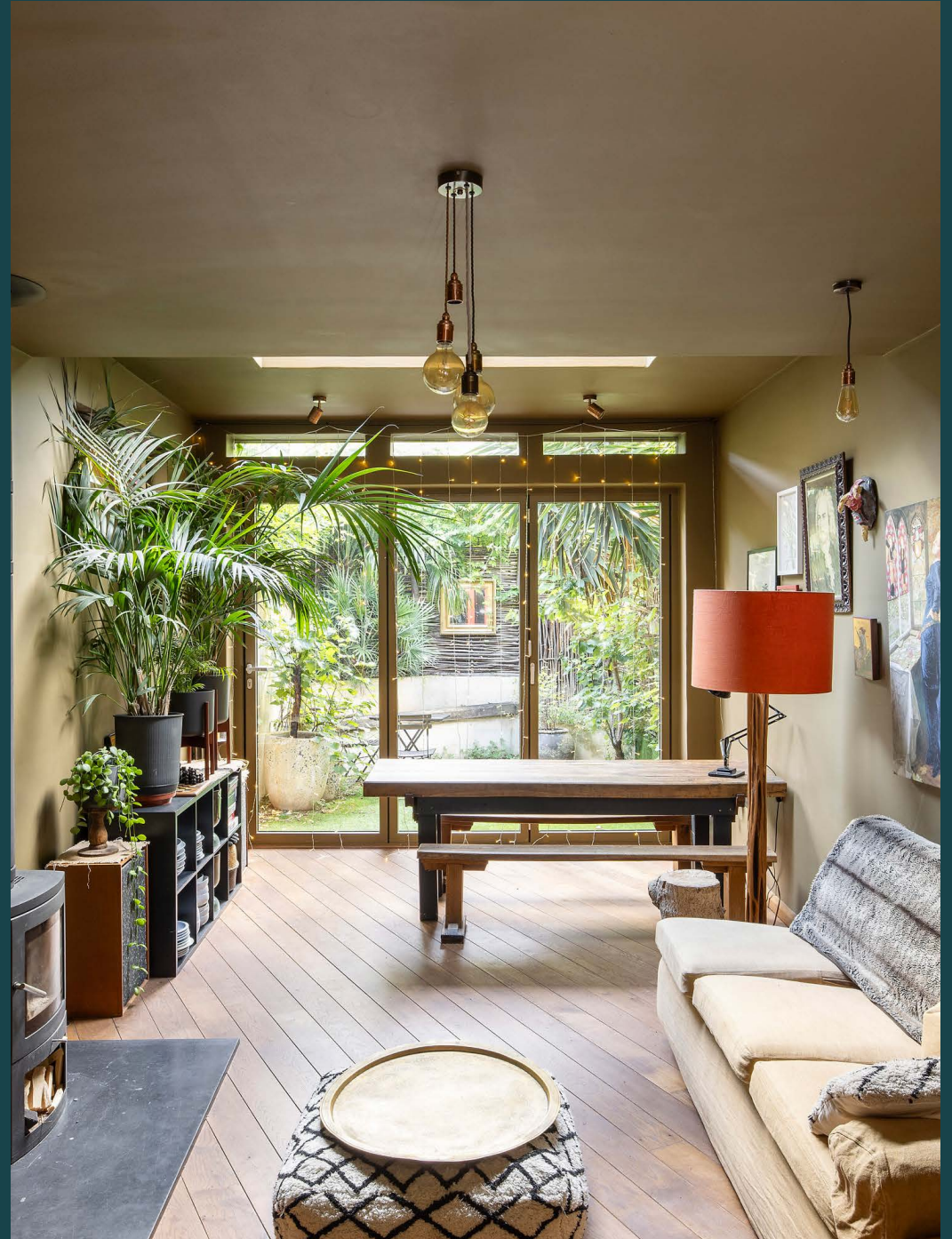


domus
stay.

Wesley Square

Notting Hill W11

3 Bedrooms, 2 Bathrooms
For 6 guests





Found in a quiet community of homes set around a leafy shared garden, escape momentarily from the city at this three-bedroom townhouse.

Surrounded by mature plants and trees, this townhouse makes a lush first impression. Part of an award-winning private garden square designed by celebrated architects Sir Terry Farrell and Sir Nicholas Grimshaw in 1976, enjoy access to the lovingly maintained communal lawns, as well as your own secluded private garden. Managed by a committee of owners, there's a welcoming community spirit here.

Between the branches, the home's distinctive pillar box red window and door frames emerge. Access is via the front garden, complete with a swing seat and firepit to soak up the setting – and the solitude. Inside, a galley office offers a dedicated space for remote working, leading to an open-plan kitchen and reception room. Through a bespoke oak door, inky blue walls create an atmospheric feel. The keenest cooks are catered for – pick bay leaves, rosemary and horseradish from the communal vegetable and herb plot to finish your dishes. Wooden work surfaces offer ample preparation space, elevated with reclaimed materials, including a vintage mirror splashback.







Look out over the sitting and dining area as you cook. Diagonal floorboards extend towards a wall of glazing that opens onto the garden. Screened by trellis and greenery, it's a quiet urban oasis. Nature is echoed in the interiors; note the ginkgo tree trunk side tables and the vintage tree trunk lamp. Mealtimes play out around the butcher's block-like dining table. Afterwards, kick back in the Paul Smith linen sofas – mood lighting comes courtesy of clusters of filament light pendants. There's a wood burning stove for cooler evenings.







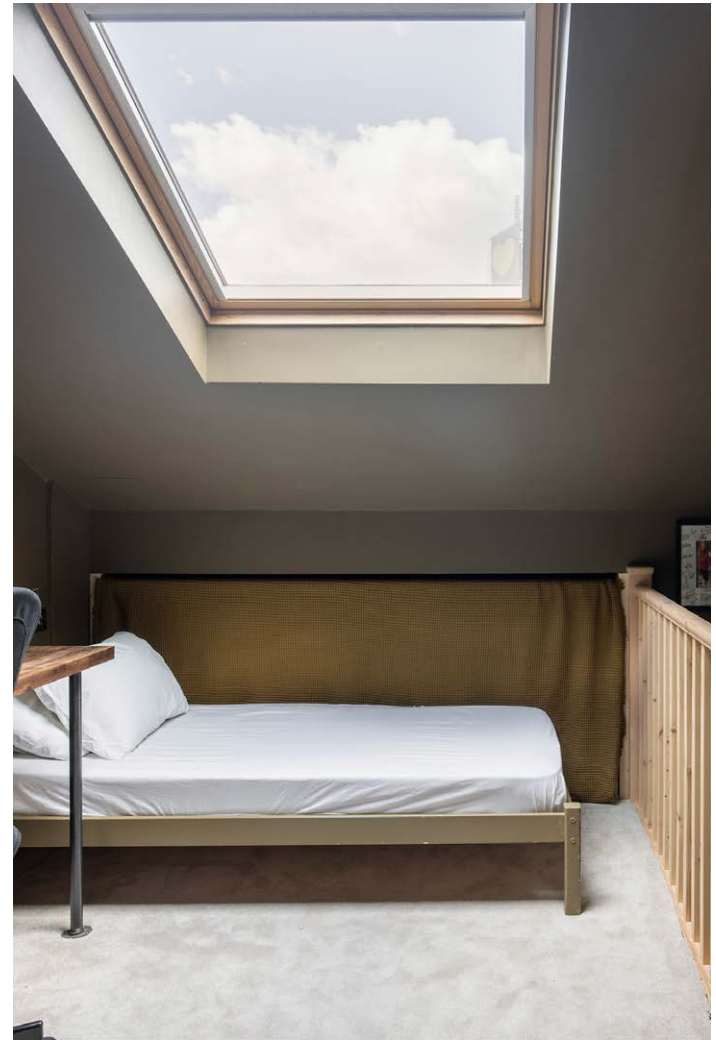
Sisal carpeted stairs lead up to the first floor and the principal bedroom, which looks out over the gardens below. Its vivid purple walls pop against a white pitched ceiling, emphasising the sense of space. Fitted wardrobes offer convenient storage. A second double bedroom also features integrated wardrobes and newly fitted plantation shutters. Both bedrooms are served by a family bathroom finished with Fired Earth clay tiles and ambient under lighting.

Up on the second floor, a third bedroom is tucked away in the eaves, with two single beds that can be separated by a curtain. A large walnut desk makes this an ideal study space. The property also comes with free allocated off-street parking – a rarity in London.





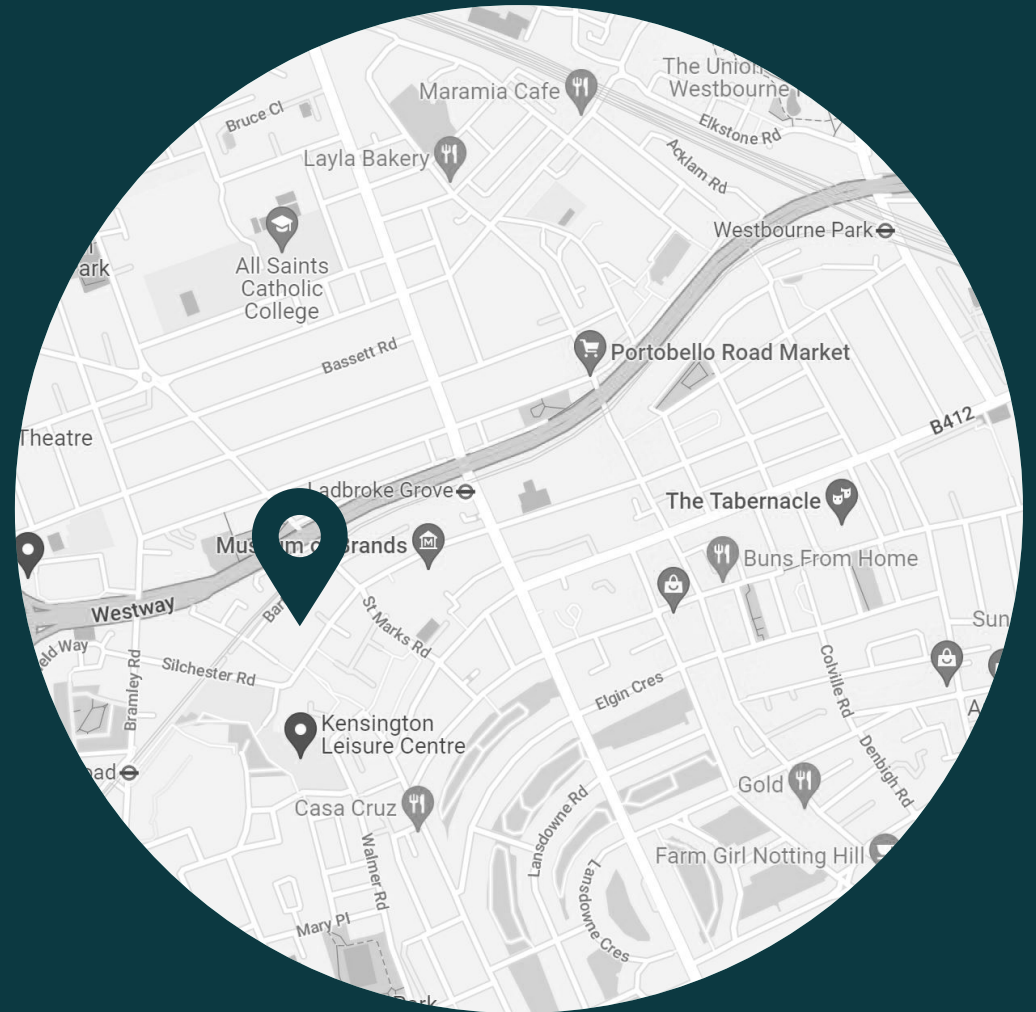




LOCATION

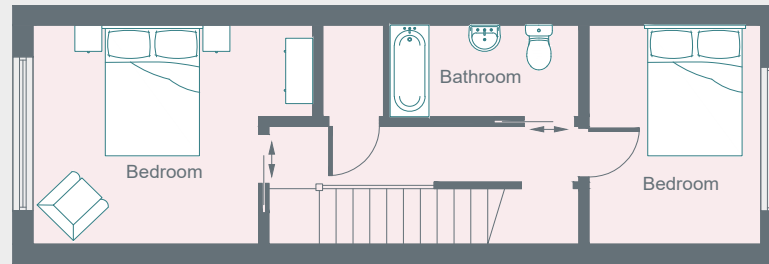
Moments from Ladbroke Grove and Portobello Road, live like a local with the best of the neighbourhood in strolling distance.

In enviable proximity to antiques shops, street food stalls and markets aplenty, there are also excellent transport links to take you further into central London, should the mood take you. Staying local, there's a buzzing sense of community around Golborne Road; grab a pastry from Layla or Lisboa, before refreshing your wardrobe at Flax or The Store. Make your way down to Portobello Road's coveted food market for a taste of global cuisine, before heading to the Museum of Brands or the Electric Cinema. Come evening, head to Straker's for dinner.

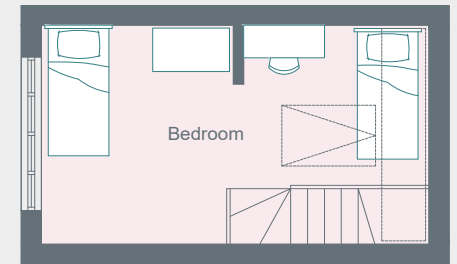


PROPERTY HIGHLIGHTS

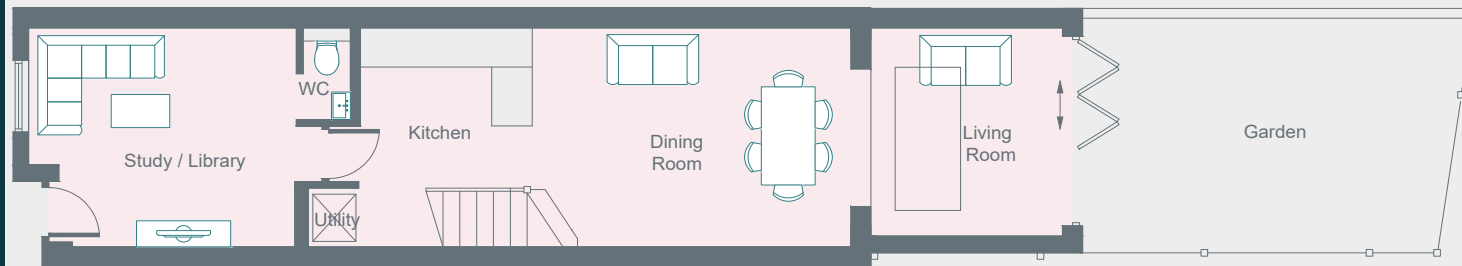
- Open-plan reception room and kitchen
- Principal bedroom
- Two further bedrooms
- Family bathroom
- Study space
- Excellent local amenities and transport links
- Royal Borough of Kensington & Chelsea



First Floor



Second Floor



Ground Floor

domus stay.

Please don't hesitate to get in touch if you have any questions or require any further information.

hello@domusstay.com

+44 (0)20 8168 8880

Domus Stay provides the perfect combination of property, place and personal service for the world's most remarkable people. If you have any questions, or if we can help in any way, please contact us on the above number. Be it about a property you have, a property you want, dates to check or any special requirements you may need, we'd love a chat.

