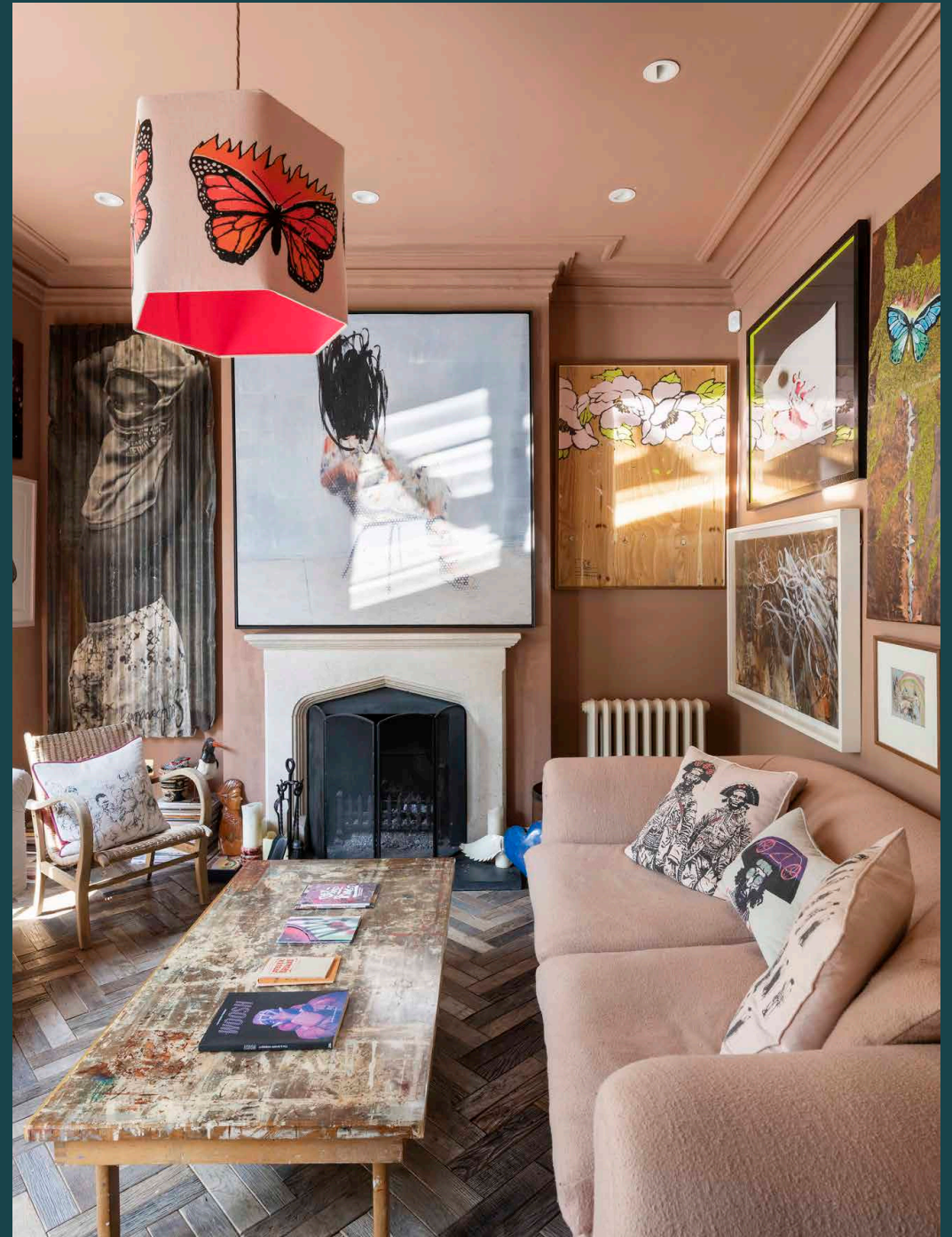


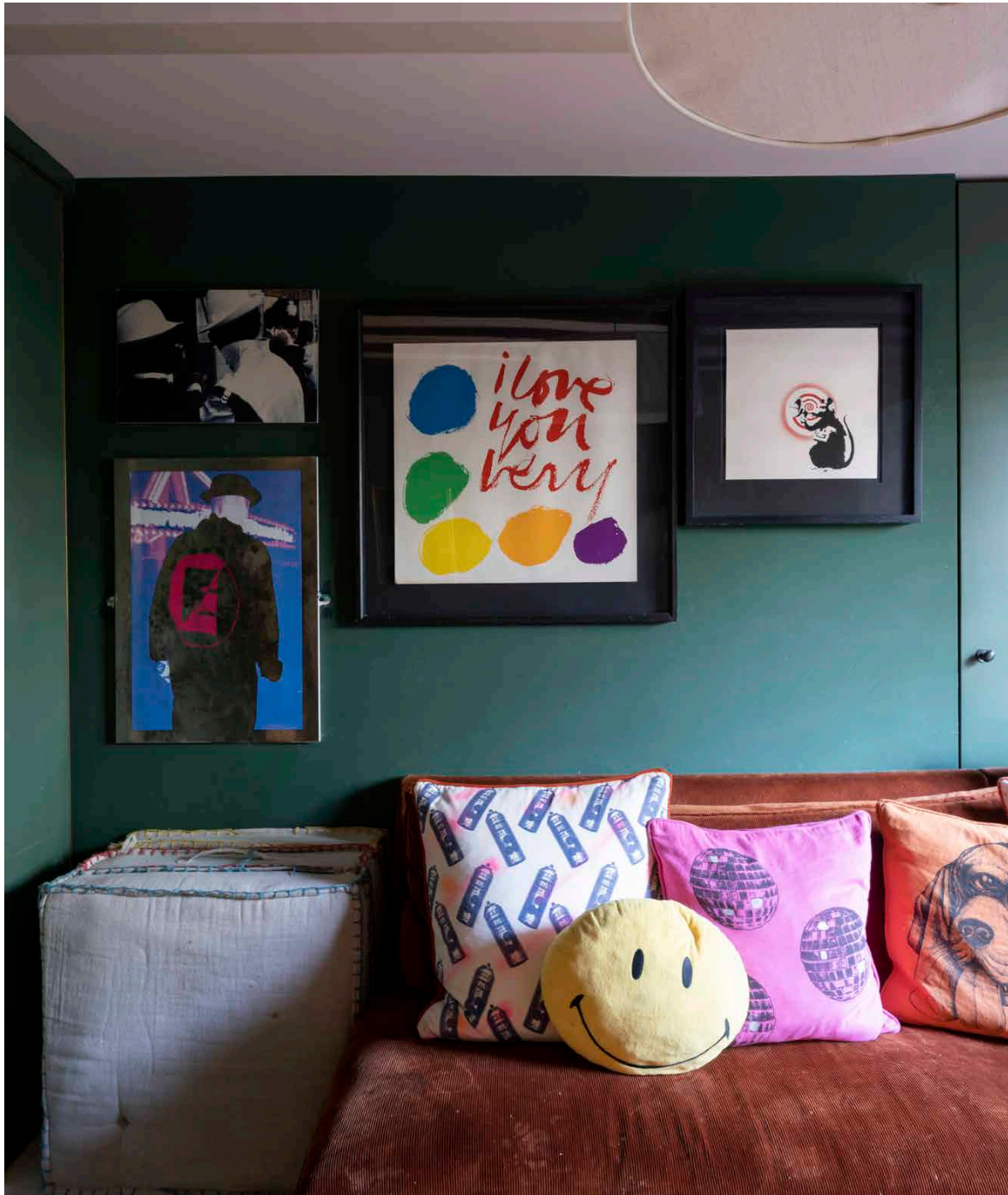
domus
stay.

Westbourne Park Villas

Notting Hill W2

4 Bedrooms, 3 Bathrooms
For 8 guests





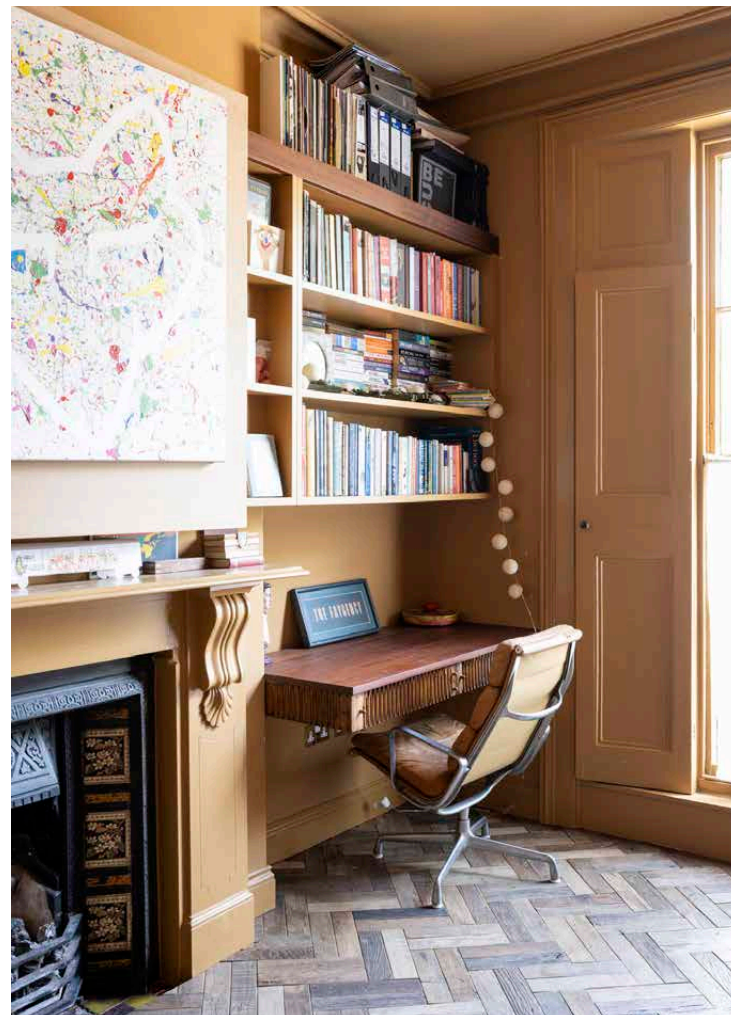
Masterminded by renowned studio Retrouvius, this four-bedroom Victorian townhouse in Notting Hill is a treasure trove of eclectic design.

A coffee-coloured frontage with arched windows framed by white masonry makes for an aptly old-world welcome to this historical home. Ionic columns flank the impressive entrance. Inside, a gallery of curious artwork and reclaimed materials spans four floors of living space crafted by design studio Retrouvius.

On the ground floor, the concept of a farmhouse kitchen has been expanded and elevated. Arranged around an island, this generous space combines Jonathan Yeo wallpaper, reclaimed cabinetry and drawer fronts from the old V&A Museum. Overhead, exposed wood beams set a rustic mood. Prepare a meal on the Lacanche range oven then dine at the distinctive natural stone table.

A distinguished reception room takes the first floor. Grounded by a period fireplace, the space is optimised for conversation and replete with myriad talking points. Eye-catching artwork fills the walls while linen cushions from Laz Emporium wear intriguing silkscreen prints. Conversate over coffee with friends or sit down with a good book and while away the afternoon in a design-led space. European oak herringbone flooring sweeps over to two large windows which flood the room with light. An additional reception serves as a children's living room.







Mustard-orange walls wear golden tones as a lantern skylight crowns the dining space, pouring in natural light. Stone flooring flows to bi-fold doors. These draw back to grant access to a leafy split-level garden. Family life plays out across its lush lawns and shaded corners.



“

Tuck into a homemade meal at the hardwood table, bathed in natural light from above.

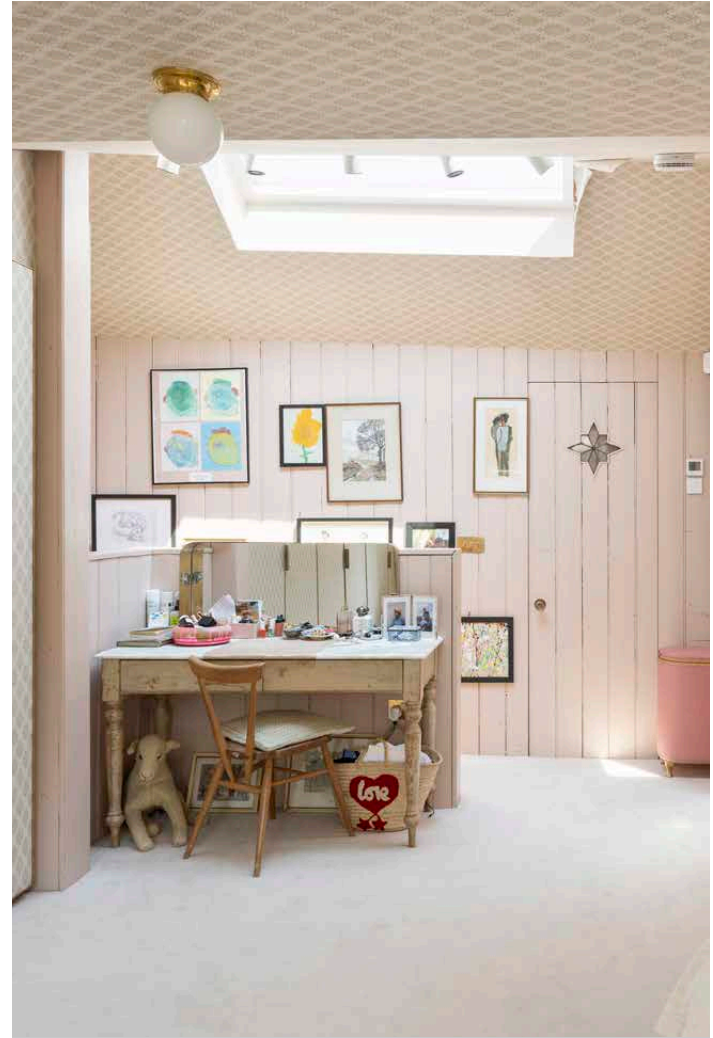






The refined palette of materials continues across the home's bedrooms. Set on the top floor, the principal suite was influenced by a Parisian apartment. A geometric motif stretches over the walls and ceiling, which features brass-accented orb lights. Two large glass doors lead to dual Juliette balconies. With church and garden views, it is a tranquil space with the feel of a country escape. Its en suite bathroom enjoys a freestanding rolltop bathtub, a washstand basin and marble tiles.



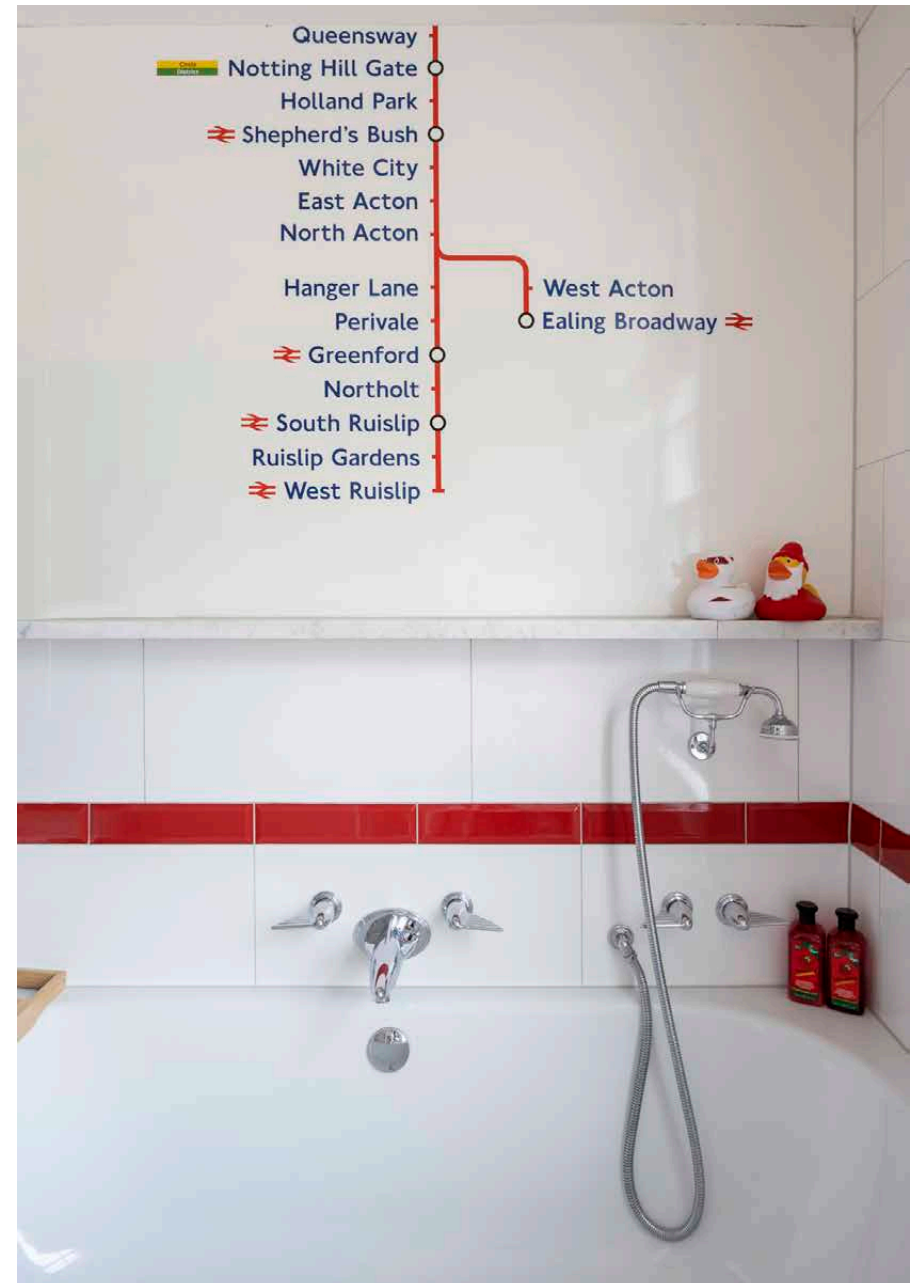






Three further bedrooms combine considered design details and repurposed materials to create layers of texture. A playful family bathroom pairs a London Underground theme with a distinctive red floor.

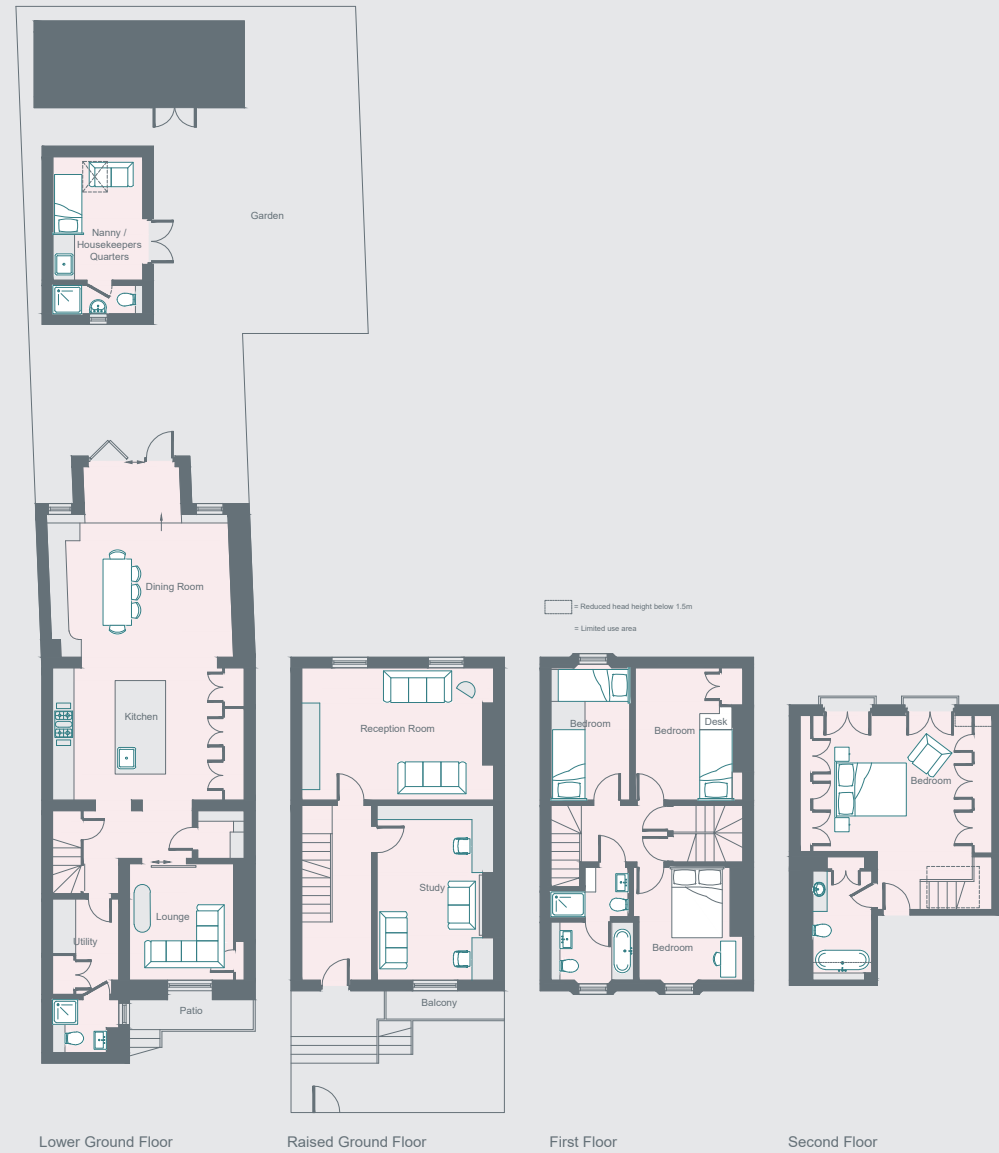
Nannying and cleaning services can be provided by the onsite housekeeper, who resides in a self-contained garden studio.





PROPERTY HIGHLIGHTS

- Open-plan kitchen and dining room
- Two reception rooms
- Principal bedroom suite
- Three further bedrooms
- Two further bathrooms
- Study
- Split-level garden
- Housekeeping and nannying services





Please don't hesitate to get in touch if you have any questions or require any further information.

hello@domusstay.com

+44 (0)20 8168 8880

Domus Stay provides the perfect combination of property, place and personal service for the world's most remarkable people. If you have any questions, or if we can help in any way, please contact us on the above number. Be it about a property you have, a property you want, dates to check or any special requirements you may need, we'd love a chat.

