

domus  
stay.

---

## New End

Hampstead NW3

3 Bedrooms, 2 Bathrooms  
For 6 guests

---





Withing walking distance from the woodland and meadows of Hampstead Heath, a three-bedroom home with an altogether calming atmosphere.

Much like its peaceful, village-like surroundings, this Hampstead home has an overwhelmingly tranquil feel, with architecture by Niall Young and interior design by Studio Loveday. Spread over three floors, the sense of volume is impressive.

Thick curtains separate the entrance hall from the main living space – an uplifting, multifunctional kitchen, dining and reception room. At once cosy and warm, it's also light and airy. Ceilings soar, wide plank ash floorboards feel comforting underfoot (with underfloor heating for the cooler months), and the colour palette leans on muted, earthy tones – offering a gallery-like backdrop for abstract and still life paintings by the likes of Katherine Jones and Marek Tobolewski.

At one end of the room, a green velvet sofa, a striped ottoman and a pair of 1940s bergère armchairs make an inviting TV corner. At the other, the kitchen is a well-curated space – a mix of antique dressers, custom-made deVOL cabinetry and high-spec appliances by Smeg and Fisher & Paykel. At its heart, a huge, marble-topped island acts as natural centrepiece, illuminated by three loped oval glass pendants. Tucked away beneath the sash windows, a table and integrated bench seating create a convivial dining area. The Sonos system – found throughout the house – brings the soundtrack. When the sun shines, throw open the French doors to the secluded patio beyond, screened by foliage.



Form meets function in the sociable kitchen. Congregate around the marble island or the dining table.



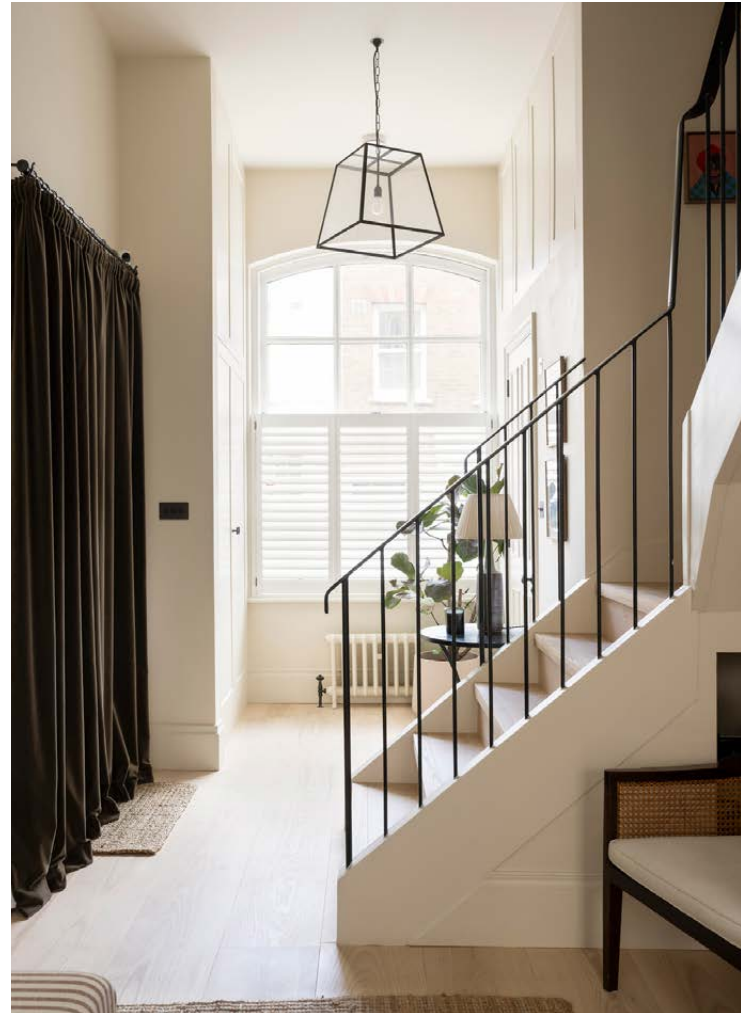
“

Soothing tones, uplifting proportions and considered design contribute to a relaxed, calming atmosphere.









On the top floor, the principal suite is a haven of calm. Hushed, neutral tones and bespoke wardrobes add to the pared-back feel, while a wavy red headboard makes the super king-sized bed an even more inviting prospect. Start the morning on the balcony looking out over the surrounding rooftops. Then revive in the en suite – all tactile chocolate brown tiles, a walnut vanity and a walk-in shower.













The floor below is home to two further bedrooms – one is set up as a king, the other with two single beds. Both are served by a family bathroom finished with eye-catching chequerboard tiles.

Set in a gated community, a private residents' entrance leads out to the abundant cafés and shops of Hampstead Village. When you don't feel like a ramble on the heath, enjoy 24/7 access to the residents' gym. There's also a secured bike store and an allocated underground parking space.



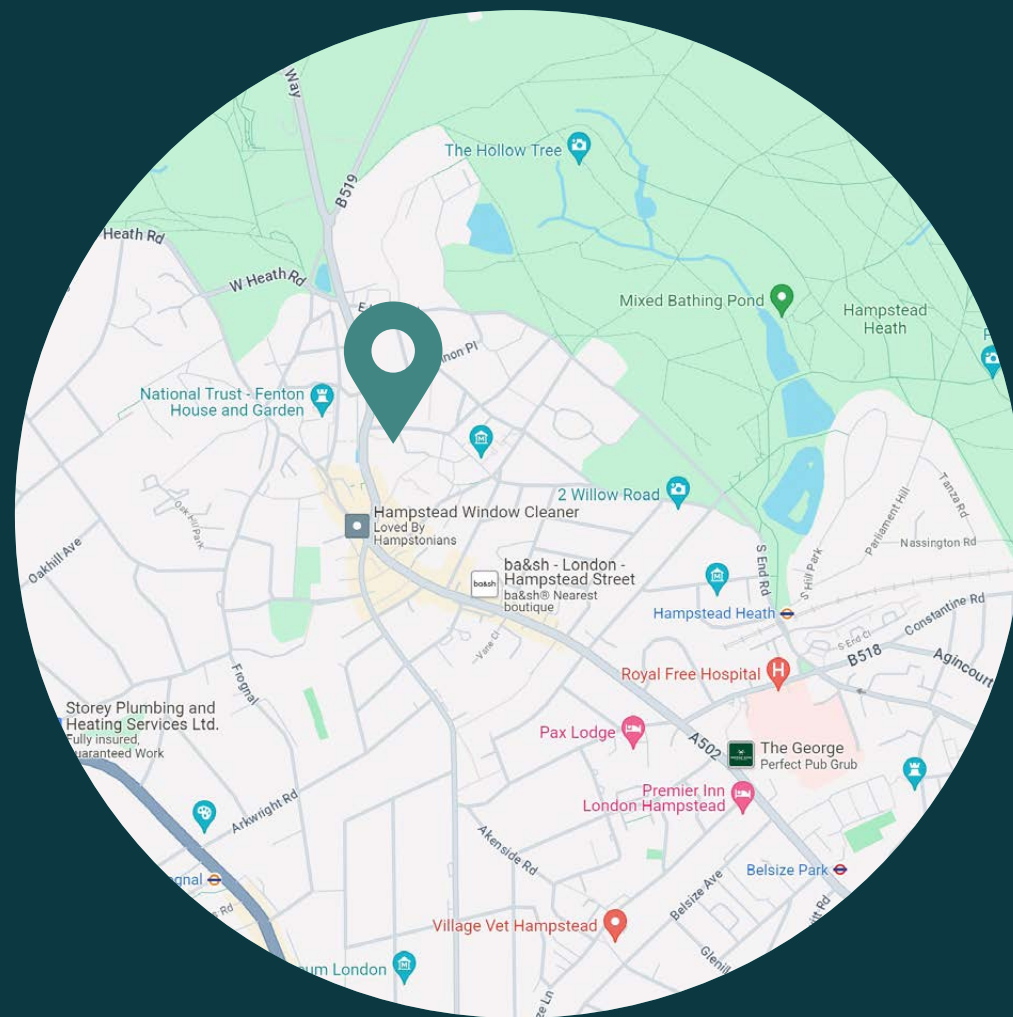




## LOCATION

Hampstead is all about its heath. Some 800 acres of wild green space, it's a place to press pause close to the heart of the city.

Ramble up to Parliament Hill viewpoint for an unbeatable vantage point over London. Or take a dip in one of the heath's outdoor bathing ponds. Reward your efforts with baked goods from Ginger & White, sushi at Jin Kichi, or a drink at the historic Spaniards Inn – a former watering hole of John Keats and Charles Dickens. The neighbourhood certainly isn't short of excellent pubs – right on the doorstep, there's the charming Holly Bush or just opposite, The Duke of Hamilton is also home to the Hampstead Jazz Club. As you'd expect from such a storied neighbourhood, historic landmarks are also plentiful. Explore Fenton House and Garden, Keats House and Burgh House, or keep an eye out for the more than 50 blue and brown plaques that commemorate former famous residents. When you want to explore the rest of the city, hop on the Northern line or the Overground.





#### PROPERTY HIGHLIGHTS

- Open-plan kitchen, dining and reception room
- Calming, considered design and generous proportions
- Principal bedroom suite with balcony
- Two guest bedrooms
- Family bathroom
- Quiet patio
- Cloakroom
- Underground parking and secure bike store
- London Borough of Camden





Please don't hesitate to get in touch if you have any questions or require any further information.

---

[hello@domusstay.com](mailto:hello@domusstay.com)

+44 (0)20 8168 8880

Domus Stay provides the perfect combination of property, place and personal service for the world's most remarkable people. If you have any questions, or if we can help in any way, please contact us on the above number. Be it about a property you have, a property you want, dates to check or any special requirements you may need, we'd love a chat.

